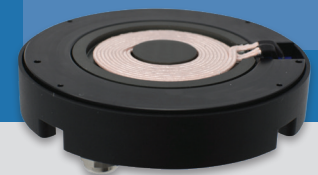


Extended Range Qi Charging

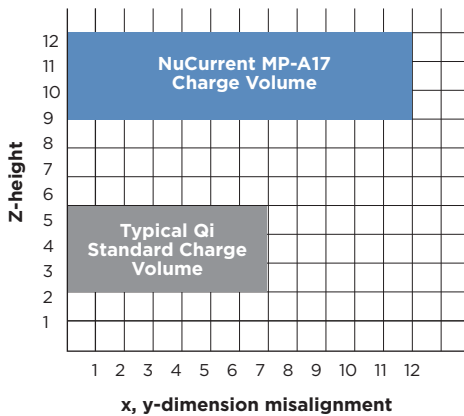
For Infrastructure and Furniture Applications

NuCurrent's innovative charging solution lets designers mount chargers under table surfaces, enabling more unique, creative designs with superior charging performance.

Integrate wireless charging in a whole new way with the world's only Qi Certified charger with 12mm range



Furniture and infrastructure models are equipped with a USB front-end so multiple units can connect to a single adapter.



Extended Range

- Industry-leading charging volume
- Improved positioning freedom for better user experience

Extended Power

- Continuous 15W wireless charging speeds
- Advanced thermal mitigation and foreign object detection



Qi-certified for safety and interoperability

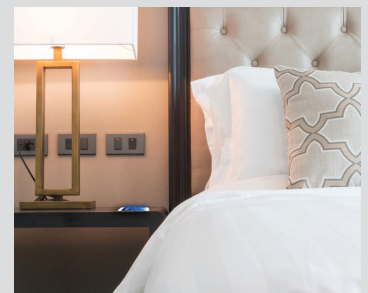


Qi Certified for Extended Power Profile ensuring:

- Safety, verified by 3rd party testing
- Interoperability with all Qi handsets
- Future proof with 15W of power

Charge through non-metallic table surfaces, including fiberglass, marble, wood, and granite

- Improves aesthetics by preserving the original surface
- Protects charger from water ingress
- Allows for easy surface sterilization



Customized solutions available for specialized applications.

Keep charging forward, contact NuCurrent today.

For more information please contact sales@nucurrent.com or call 312-637-3469.

www.nucurrent.com/QiXRP