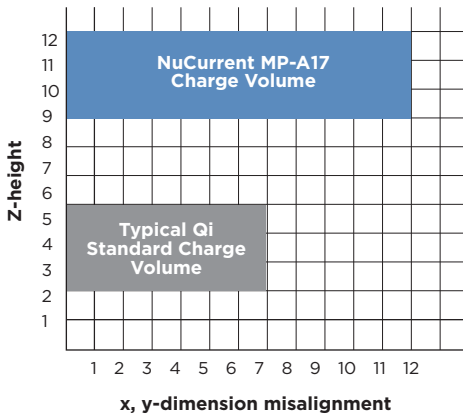
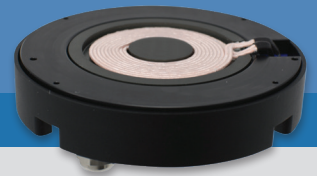


Extended Range Qi Charging For RV and Marine Applications

NuCurrent's innovative charging design lets designers mount chargers under thicker surfaces enabling more unique, creative and dynamic cockpits for boats and better functioning RV interiors.

Integrate wireless charging in a whole new way with the world's only Qi Certified charger with 12mm range



Extended Range

- Industry-leading charging volume
- Improved positioning freedom for better user experience

Extended Power

- Continuous 15W wireless charging speeds
- Advanced thermal mitigation and foreign object detection

Designed for Marine and RV applications:

- Compatible with both 12V and 24V power systems
- Front-end designed for compliance with ISO 7637-2 and ISO 16750-2
- Works over entire battery voltage range

Qi-certified for safety and interoperability



Qi Certified for Extended Power Profile ensuring:

- Safety, verified by 3rd party testing
- Interoperability with all Qi handsets
- Future proof with 15W of power

Charge through non-metallic table surfaces, including fiberglass, marble, wood, and granite

- Improves aesthetics by preserving the original surface
- Protects charger from water ingress
- Allows for easy surface sterilization



Customized solutions available for specialized applications.

Keep charging forward, contact NuCurrent today.

For more information please contact sales@nucurrent.com or call 312-637-3469.

www.nucurrent.com/QiXRP